

## TA QUICK START

V1.0.0 Feb 2013

## Download TA Software

### 1) TA V6.0

By applying the TA, we can use the PC as a Micro Controlling Unit.

This will help the client to make the visualization of the commands on the PC. Main function was applied by the TA6.0.

Link: [http://www.amppdisplay.com/documents/pdf/EN\\_Terminal.rar](http://www.amppdisplay.com/documents/pdf/EN_Terminal.rar)

### 2) Toolbox

SD card configuration, Font selection, Icon creation tool.

Link: [http://www.amppdisplay.com/documents/pdf/Tool%20Box%20\(June%202012\).rar](http://www.amppdisplay.com/documents/pdf/Tool%20Box%20(June%202012).rar)

### 3) Net Frame work2.0

It supports our Terminal Assistant to run on your PC. Without it, our Terminal Assistant fails to start.

Link: <http://www.amppdisplay.com/documents/pdf/NetFx64.exe> (For 32bit PC OS)

<http://www.amppdisplay.com/documents/pdf/dotnetfx.exe> (For 64bit PC OS)

### 4) XR21x141x USB Driver for Windows XP/2003/Vista/7 (x86+x64)

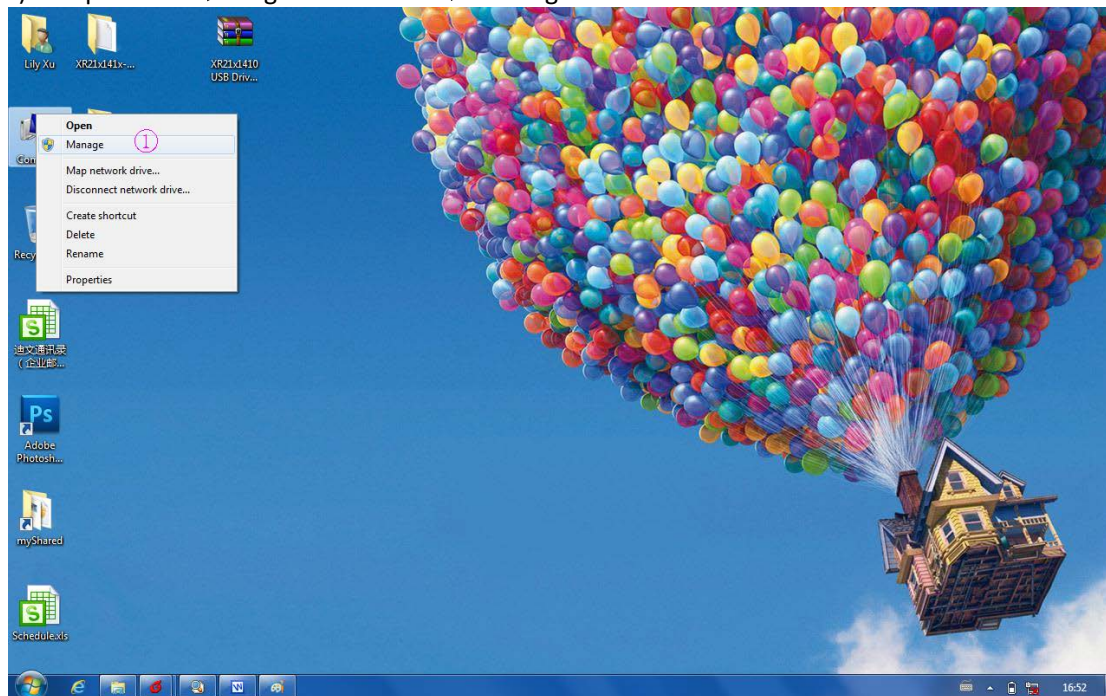
These are a driver program to build a "bridge" between the client's PC and module via USB module, which we use to communicate with our HMIs. For different type of serial driver, please see more details from The TA v6.0 Help Document.

Steps to install XR21V1410 driver (for HDL662):

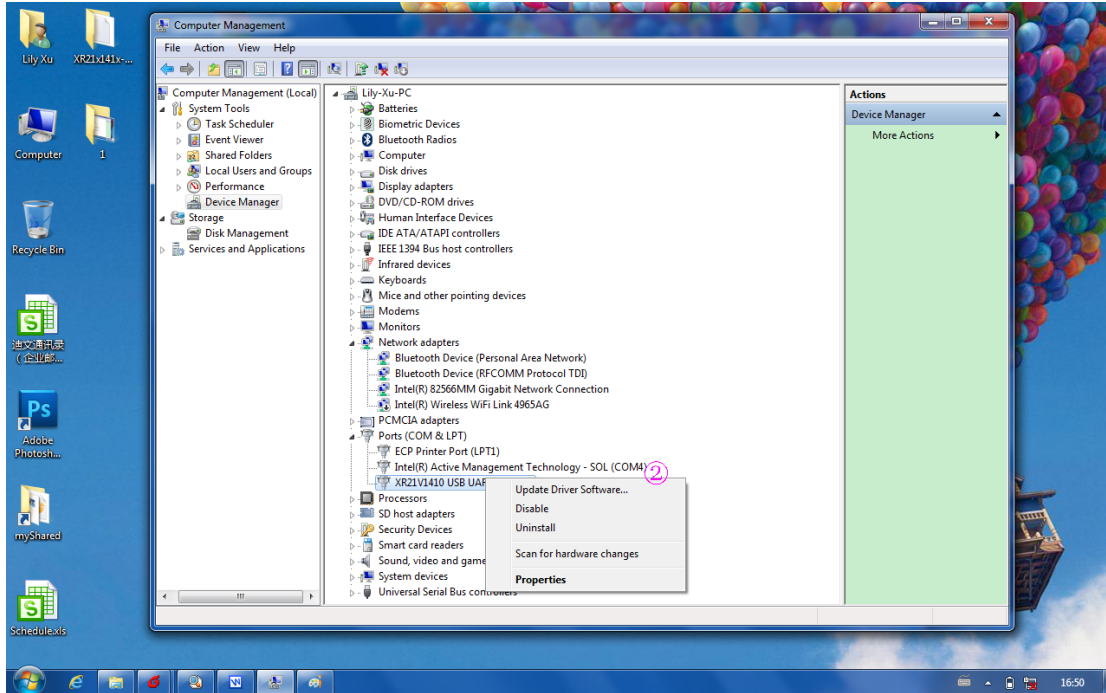
1) Download the driver file and unzip it.

Link: <http://www.amppdisplay.com/documents/pdf/XR21x141x-XP2KVista7-DriversOnly-Vers1.8.0.0.zip>

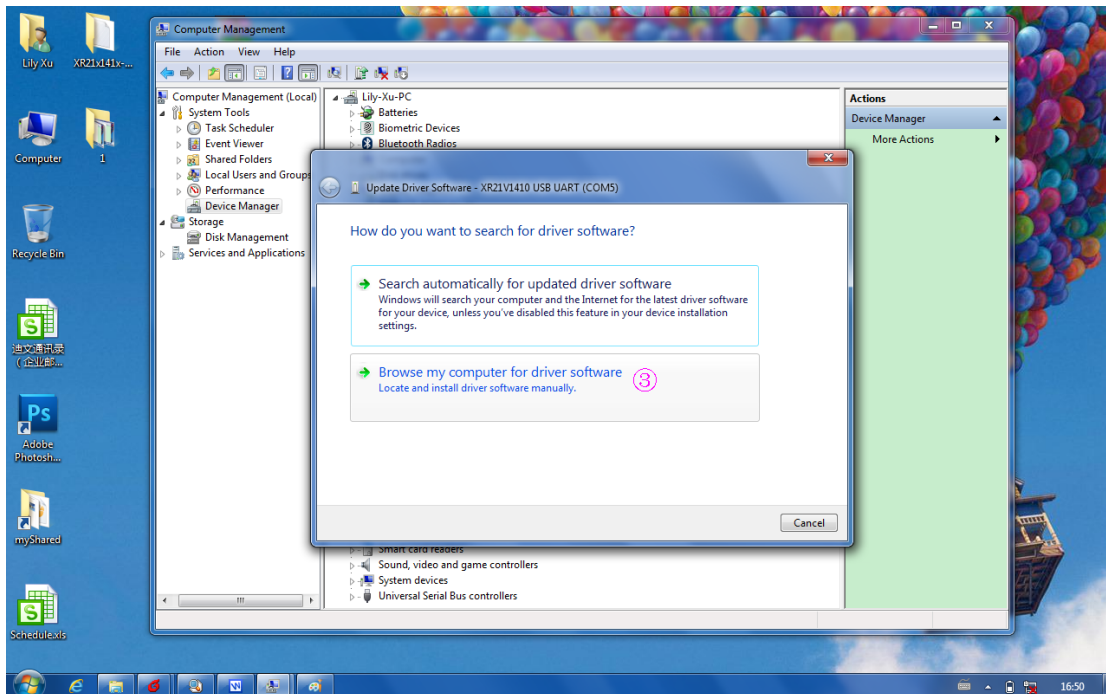
2) Computer → Right button → Manage



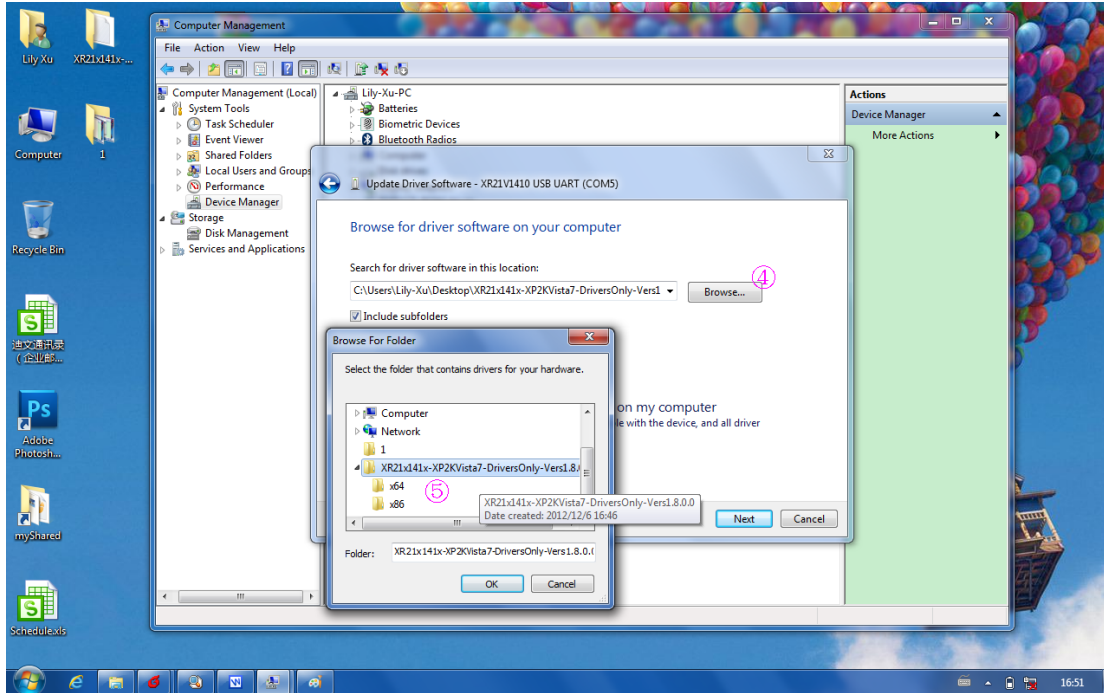
3) Device Manager → Ports → Update Driver Software



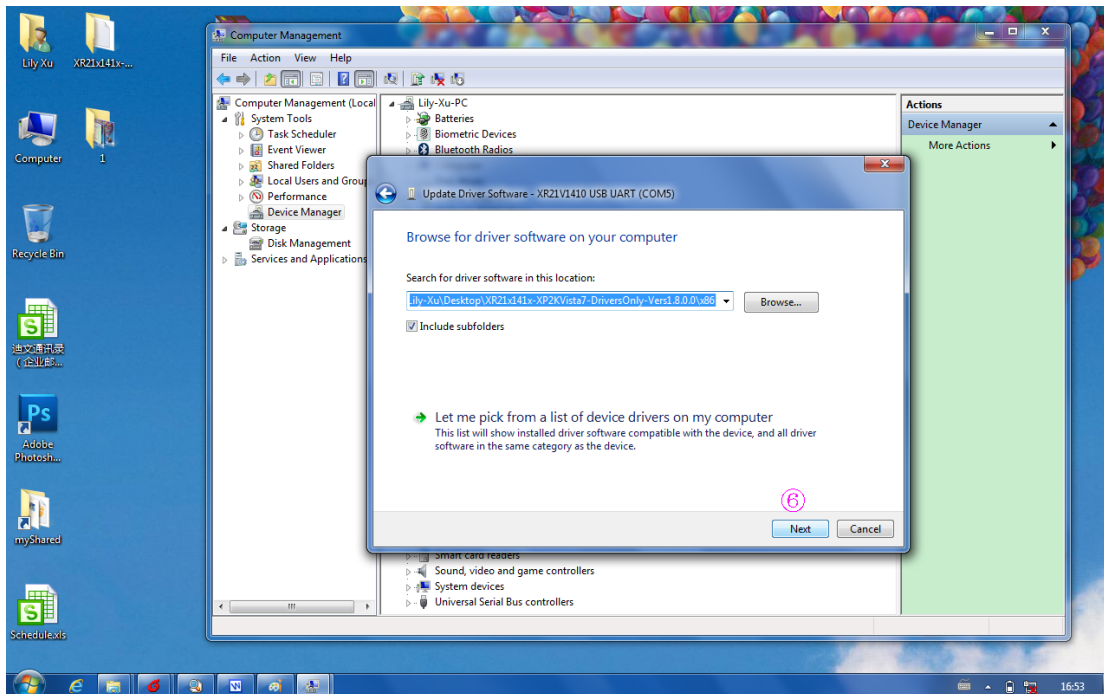
4) Select the second method.



5) Browse —> Select the path of driver file and click the right OS Type.



6) Click 'Next' and complete the installation.

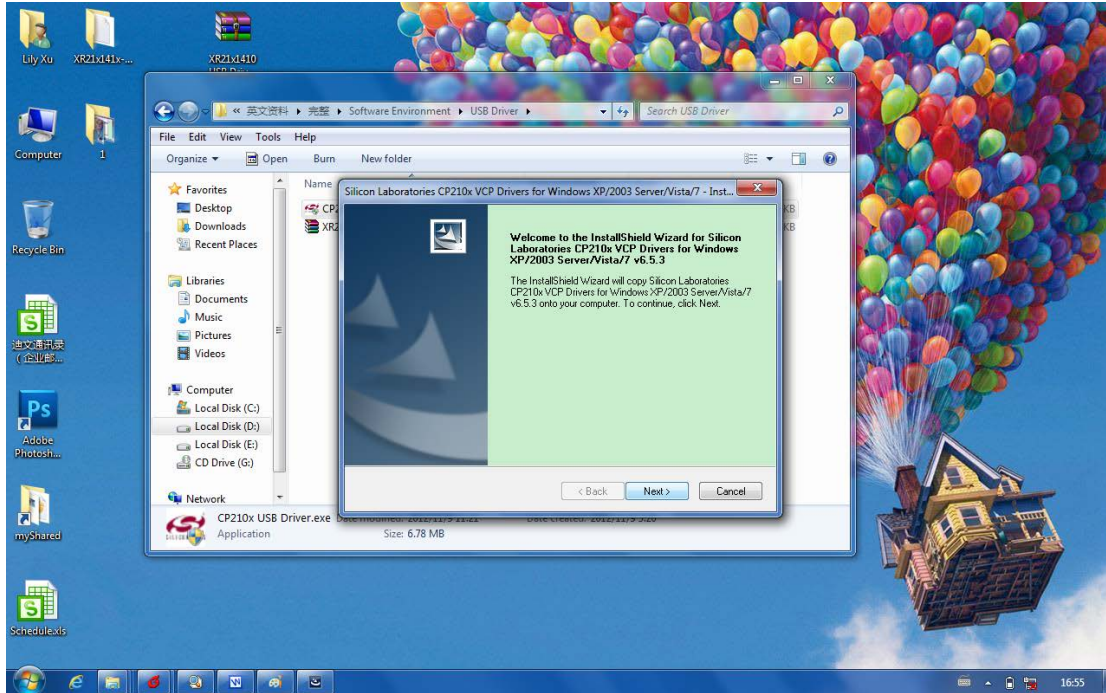


### 5) CP210x USB Driver for Windows XP/2003/Vista/7 (x86+x64)

Steps to install CP210x driver (for HDL661 and HDL663):

Download the driver file and click 'Next' to install.

Link:[http://www.ampdisplay.com/documents/pdf/CP210x\\_VCP\\_Win\\_XP\\_S2K3\\_Vista\\_7.exe](http://www.ampdisplay.com/documents/pdf/CP210x_VCP_Win_XP_S2K3_Vista_7.exe)



## Download TA Documentation

### 1) TA v6.0 Help Document

This document will tell the step by step procedure to use our Terminal Assistant.

Link: <http://www.ampdisplay.com/documents/pdf/TA%20V6.0%20Help.pdf>

### 2) Command Set V.2.4 (The most important datasheet)

Command Set helps client to use the right code for application function regarding the Terminal Assistant v6.0

Link: <http://www.ampdisplay.com/documents/pdf/Command%20Set%20V2.4.pdf>

### 3) Instruction Manual

This document helps client regarding the Interface Connection, the accessories, the command set for following kernels: H600, D100, M100, M600, K600,

The Instruction Manual will give all information needed for establishing the right connection with the LCM and PC.

Link: <http://www.ampdisplay.com/documents/pdf/Instruction%20Manual.pdf>

### 4) DWIN Software Development Guide V3.2

Link: [http://www.ampdisplay.com/documents/pdf/dwin\\_Development\\_Guide.pdf](http://www.ampdisplay.com/documents/pdf/dwin_Development_Guide.pdf)

### 5) Software Users Guide V3.0

Step by Step software load instruction



This document shows to the client how to develop project based on customer application. It explained the system configuration and peripherals.

7) DWIN TA6.0 Tutorial Video

**Link:** <http://www.ampdisplay.com/documents/pdf/tutorial%20video.wmv>

8) Font Library download instructions

**Link:** <http://www.ampdisplay.com/documents/pdf/Default%20font%20library.zip>

Procedure for Changing to High Speed Download-

AA E3 55 AA 5A A5 00 10 00 FF CC 33 C3 3C - 921600

AA E3 55 AA 5A A5 00 07 00 FF CC 33 C3 3C- 115200

**TA V6.0 only High Speed download- K600+ default baud rate 115K only.**